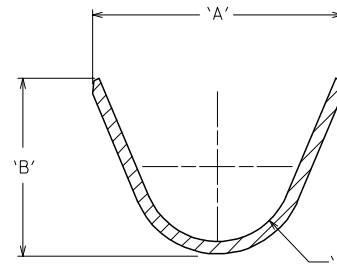
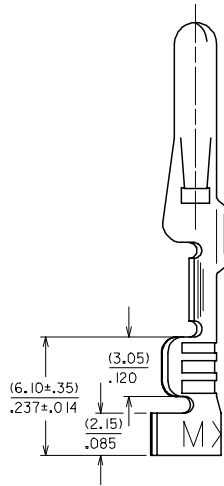
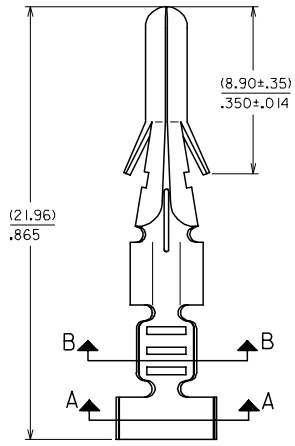
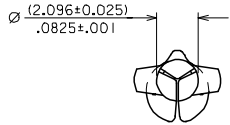


10 9 8 7 6 5 4 3 2 1

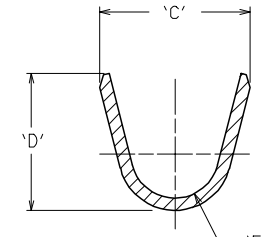
ENG NO.	ENG NO.	FORM	'A'	'B'	'C'	'D'	'E'	'F'
002-08-1335	8980-6L-LF	LOOSE, 14-20 AWG WIRE	(4.44) .175	(3.39) .133	(3.02) .119	(3.61) .142	(1.23) .048	(0.61) .024
002-08-1337	8980-6L1-LF	LOOSE, 18-22 AWG WIRE	(3.28) .129	(2.58) .102	(2.44) .096	(2.58) .102	(0.91) .036	(0.53) .021

NOTES:

- THIS TERMINAL FOR USE WITH HOUSING P/N, 8981-4M\*
- FINISH: (.00089)/.000035 MIN. TIN OVER (.00051)/.000020 MIN. NICKEL.
- MATERIAL: (.025)/.010 THK PHOS BRONZE, ALLOY CA 51000.



SECTION A-A



SECTION B-B

OBS P/N EC NO: S2007-0291 DRWN:SKANG CHKD:MLONG APPR:SKTOH	2006/09/19 2006/09/20 2006/09/21	DESCRIPTION REV	QUALITY SYMBOLS	GENERAL TOLERANCES (UNLESS SPECIFIED) <table border="1"> <thead> <tr> <th></th> <th>mm</th> <th>INCH</th> </tr> </thead> <tbody> <tr> <td>4 PLACES</td> <td>± ---</td> <td>± ---</td> </tr> <tr> <td>3 PLACES</td> <td>± ---</td> <td>± .008</td> </tr> <tr> <td>2 PLACES</td> <td>± 0.20</td> <td>± ---</td> </tr> <tr> <td>1 PLACE</td> <td>± ---</td> <td>± ---</td> </tr> </tbody> </table> ANGULAR ± 3 °		mm	INCH	4 PLACES	± ---	± ---	3 PLACES	± ---	± .008	2 PLACES	± 0.20	± ---	1 PLACE	± ---	± ---	DIMENSION STYLE MM/IN	SCALE NTS	DESIGN UNITS METRIC	THIRD ANGLE PROJECTION
					mm	INCH																	
			4 PLACES		± ---	± ---																	
			3 PLACES		± ---	± .008																	
2 PLACES	± 0.20	± ---																					
1 PLACE	± ---	± ---																					
▽=0 ∇=0	DRAWN BY JWAN	DATE 1994/11/03	TITLE PIN CRIMP TYPE DIA. (2.13)/.084																				
	CHECKED BY ERPOH	DATE 1994/11/04																					
	APPROVED BY SKTOH	DATE 1994/11/04	MOLEX INCORPORATED																				
	MATERIAL NO.	DOCUMENT NO.				SHEET NO. 1 OF 1																	
	DRAFT WHERE APPLICABLE MUST REMAIN WITHIN DIMENSIONS		SIZE A3	SEE TABLE THIS DRAWING CONTAINS INFORMATION THAT IS PROPRIETARY TO MOLEX INCORPORATED AND SHOULD NOT BE USED WITHOUT WRITTEN PERMISSION																			

9 8 7 6 5 4 3 2 1